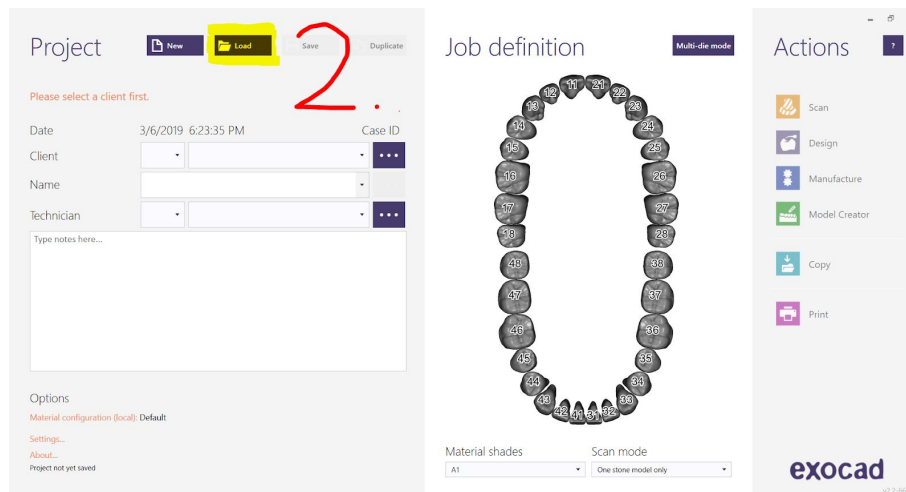


## How to import ipad face scan into Exocad and view it

1. Imported face scan files should be saved in:  
**YOUR\_EXOCAD\_PATH\CAD-Data\<2017-06-28\_00001-\*\*\*>** on your Windows computer.
2. Then, rename your head3d.obj file (or whatever name you had for the OBJ file that was exported) to **"2017-06-28\_00001-facescan.obj"**  
  
\*If you have a PLY file, rename it to **"2017-06-28\_00001-facescan.ply"**.
3. Next, load this dataset in your Exocad DentalDB software:



4. Then, click the Design button:



5. You should now be able to see the imported face scan inside the Exocad viewer:

